

## Brad Sellers

---

**From:** Rudy Warnock <[rwarnock@warnockeng.com](mailto:rwarnock@warnockeng.com)>  
**Sent:** Wednesday, March 05, 2014 6:06 PM  
**To:** Brad Sellers  
**Subject:** Re: preliminary plat of Camden Crossing of Caroline ~~W~~ ✓

Brad,

I'm good with this plat.

Warnock & Associates, LLC  
Rudy M. Warnock, Jr., P.E.  
President

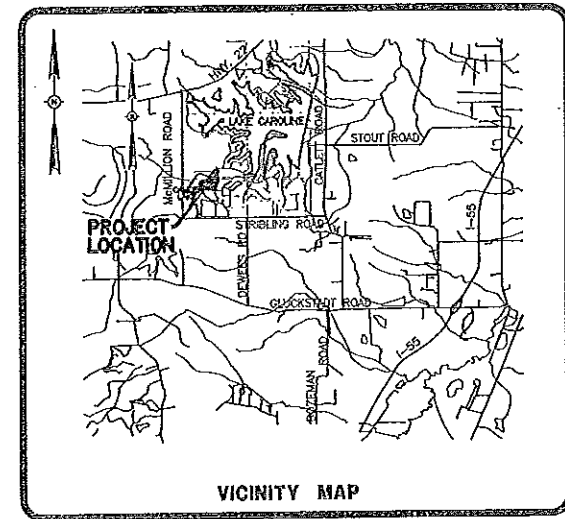
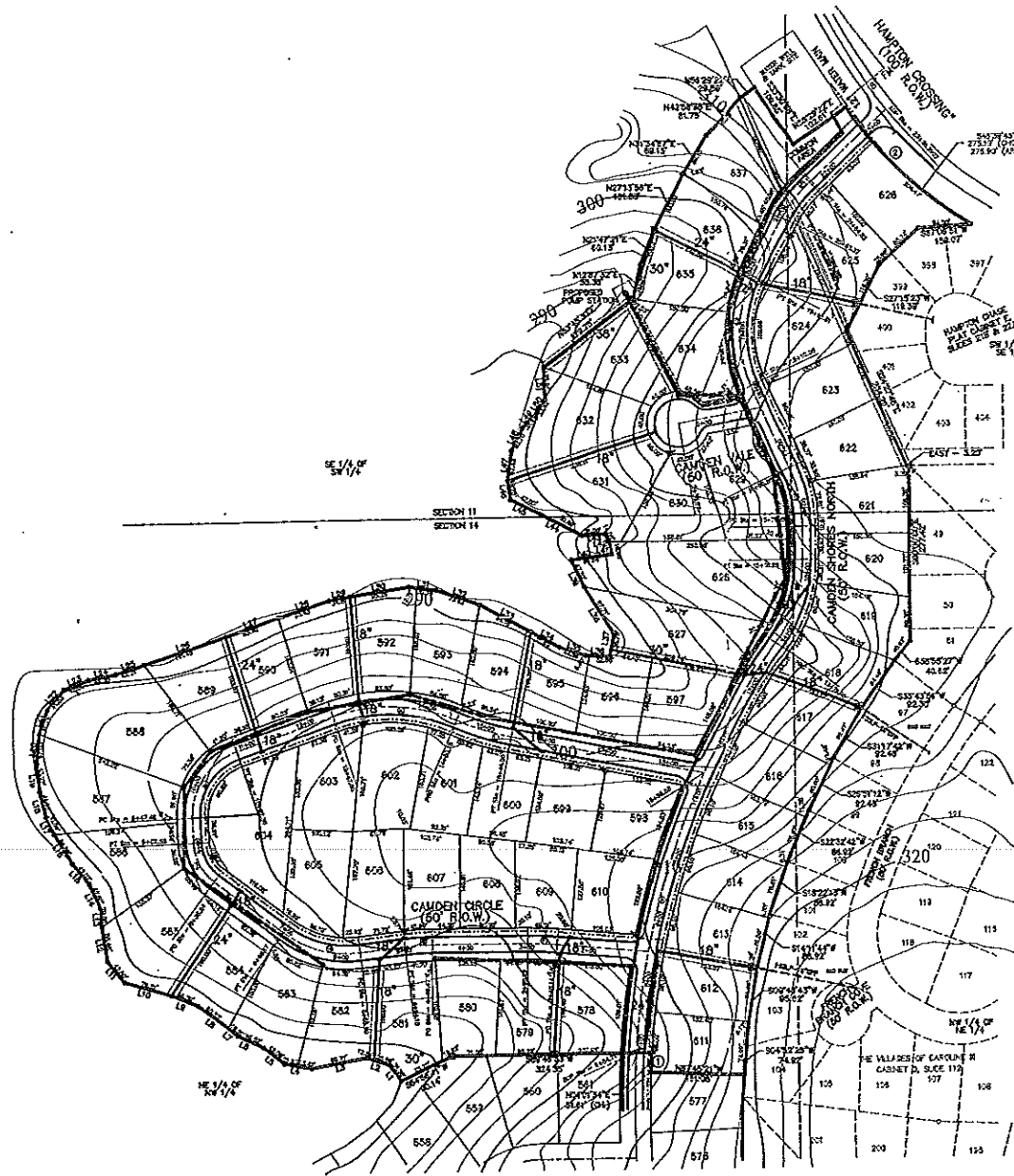
On Mar 5, 2014, at 4:19 PM, Brad Sellers <[Brad.Sellers@madison-co.com](mailto:Brad.Sellers@madison-co.com)> wrote:

Rudy,

I have reviewed the plat referenced above and find it complies with all Planning and Zoning regulations. Upon your approval, let me know and I'll schedule it for the BOS agenda.

Brad

NUMBER	DIRECTION	DISTANCE
L1	N36°11'09" W	31.58'
L2	N72°32'11" E	33.74'
L3	S89°16'41" W	73.71'
L4	N79°01'08" W	45.25'
L5	S31°50'55" W	42.09'
L6	N24°35'22" W	46.52'
L7	N49°39'34" W	19.21'
L8	N52°42'30" W	53.32'
L9	N97°53'02" W	45.39'
L10	N75°14'09" W	78.51'
L11	N36°40'05" W	47.60'
L12	N66°50'33" W	55.45'
L13	N03°59'58" W	29.06'
L14	N24°42'48" W	42.60'
L15	N09°37'48" W	42.07'
L16	N31°38'51" W	54.82'
L17	N24°52'46" W	30.59'
L18	N13°31'49" W	41.92'
L19	N05°19'24" W	43.27'
L20	N05°07'25" E	47.59'
L21	N18°46'40" E	40.83'
L22	N40°27'19" E	41.53'
L23	N70°11'50" E	42.60'
L24	N79°08'44" E	44.35'
L25	N72°24'43" E	46.68'
L26	N71°54'48" E	126.59'
L27	N71°33'48" E	90.02'
L28	N72°49'06" E	66.61'
L29	N79°58'29" E	34.81'
L30	N81°50'40" E	65.25'
L31	S52°45'00" E	44.69'
L32	S70°33'28" E	73.83'
L33	S61°39'34" E	54.18'
L34	S61°05'42" E	51.69'
L35	S72°04'39" E	44.65'
L36	S67°43'45" E	33.14'
L37	N09°12'18" E	39.78'
L38	N31°54'05" W	57.71'
L39	N26°05'23" W	47.82'
L40	N82°49'54" E	66.64'
L41	N11°25'32" W	19.58'
L42	N26°50'17" W	14.65'
L43	S87°02'49" W	33.00'
L44	N52°35'24" W	60.89'
L45	N64°02'23" W	47.55'
L46	N07°09'51" W	30.28'
L47	N07°26'58" E	47.43'
L48	N27°07'17" E	43.75'
L49	N44°43'33" E	33.43'
L50	N31°58'57" E	23.42'
L51	N02°09'43" W	31.91'

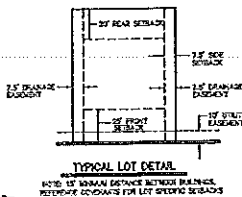
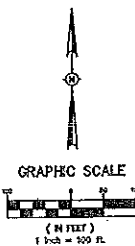


**UTILITY LEGEND**

—	WATER
—	SEWER
—	ELECTRICITY
—	TELEPHONE
—	CABLE TV
—	STORM SEWER
—	IRRIGATION
—	OTHER

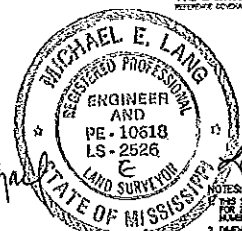
**BOUNDARY INTERSECTIONS**

①	ST. 1/4 - 1/4
②	ST. 1/4 - 1/4
③	ST. 1/4 - 1/4
④	ST. 1/4 - 1/4
⑤	ST. 1/4 - 1/4
⑥	ST. 1/4 - 1/4
⑦	ST. 1/4 - 1/4
⑧	ST. 1/4 - 1/4
⑨	ST. 1/4 - 1/4
⑩	ST. 1/4 - 1/4
⑪	ST. 1/4 - 1/4
⑫	ST. 1/4 - 1/4
⑬	ST. 1/4 - 1/4
⑭	ST. 1/4 - 1/4
⑮	ST. 1/4 - 1/4
⑯	ST. 1/4 - 1/4
⑰	ST. 1/4 - 1/4
⑱	ST. 1/4 - 1/4
⑲	ST. 1/4 - 1/4
⑳	ST. 1/4 - 1/4
㉑	ST. 1/4 - 1/4
㉒	ST. 1/4 - 1/4
㉓	ST. 1/4 - 1/4
㉔	ST. 1/4 - 1/4
㉕	ST. 1/4 - 1/4
㉖	ST. 1/4 - 1/4
㉗	ST. 1/4 - 1/4
㉘	ST. 1/4 - 1/4
㉙	ST. 1/4 - 1/4
㉚	ST. 1/4 - 1/4
㉛	ST. 1/4 - 1/4
㉜	ST. 1/4 - 1/4
㉝	ST. 1/4 - 1/4
㉞	ST. 1/4 - 1/4
㉟	ST. 1/4 - 1/4
㊱	ST. 1/4 - 1/4
㊲	ST. 1/4 - 1/4
㊳	ST. 1/4 - 1/4
㊴	ST. 1/4 - 1/4
㊵	ST. 1/4 - 1/4
㊶	ST. 1/4 - 1/4
㊷	ST. 1/4 - 1/4
㊸	ST. 1/4 - 1/4
㊹	ST. 1/4 - 1/4
㊺	ST. 1/4 - 1/4
㊻	ST. 1/4 - 1/4
㊼	ST. 1/4 - 1/4
㊽	ST. 1/4 - 1/4
㊾	ST. 1/4 - 1/4
㊿	ST. 1/4 - 1/4



**BOUNDARY CORNER DATA**

① = 3245.41'	② = 2247.07'
③ = 1243.27'	④ = 1243.27'
⑤ = 1243.27'	⑥ = 1243.27'



DEVELOPER  
**CAMDEN LLC**  
 655 WILLOW DRIVE  
 MADISON, MISSISSIPPI 39110

- NOTES**
- THIS SURVEYOR LIES WITHIN THE LIMITS ESTABLISHED BY THE MISSISSIPPI SURVEYING BOARD, EFFECTIVE MARCH 17, 2004.
  - ALL DIMENSIONS ALONG CURVES ARE CHORD DISTANCES.
  - SURVEY CLASSIFICATION: "A"
  - REFERENCE MERIDIAN: WEST LINE OF THE VILLAGES OF CAROLINE II, PLAT CABINET D - SLICE 112.
  - AREA = 26.840 ACRES, MORE OR LESS.
  - CONCRETE MONUMENTS WILL BE PLACED AT ALL CORNERS OF THE SURVEYED POST-CONSTRUCTION.

**H D LANG AND ASSOCIATES, INC.**  
 POST OFFICE BOX 16066 JACKSON, MISSISSIPPI 39236

PROJECT: **PRELIMINARY PLAT OF CAMDEN CROSSING OF CAROLINE V**

LOCATION: **SITUATED IN THE NORTHWEST 1/2 OF THE NORTHWEST 1/4 AND THE NORTHWEST 1/2 OF THE NORTHWEST 1/4 OF SECTION 14 AND THE SOUTHWEST 1/2 OF THE SOUTHWEST 1/4 AND THE SOUTHWEST 1/2 OF THE SOUTHWEST 1/4 OF SECTION 11, TOWNSHIP 8 NORTH - RANGE 1 EAST MADISON COUNTY, MISSISSIPPI**

DATE	REVISION	BY	DRAWN BY: D.L.M.
			DATE: 3-5-14
			SCALE: 1" = 100'
			BOOK: PAGE:
			PROJECT NO.: 00-199